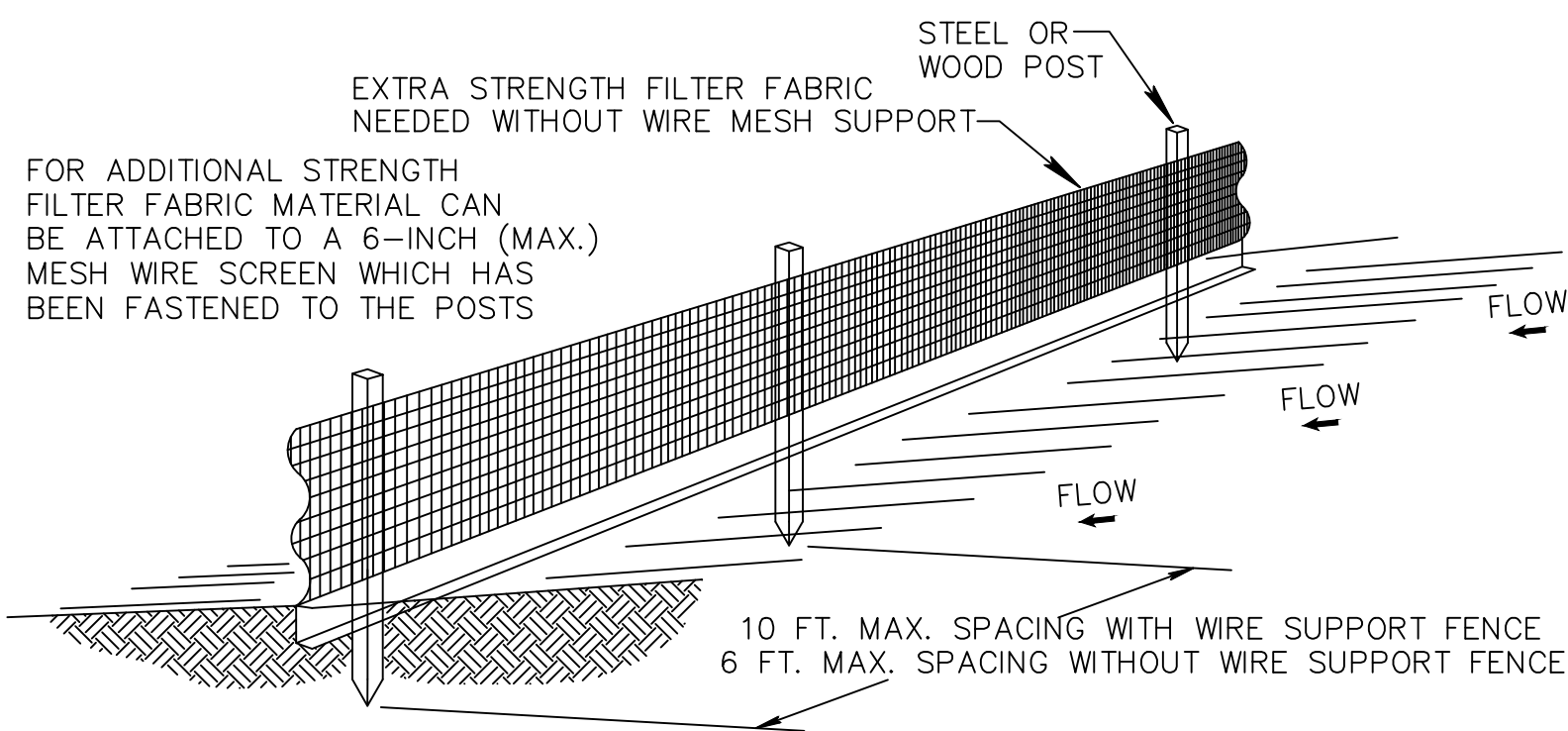


SOURCE: EROSION DRAW



1. THE HEIGHT OF A SILT FENCE SHALL NOT EXCEED 36 INCHES (90 CM).
2. THE FILTER FABRIC SHALL BE PURCHASED IN A CONTINUOUS ROLL CUT TO THE LENGTH OF THE BARRIER TO AVOID THE USE OF JOINTS.
3. POSTS SHALL BE SPACED A MAXIMUM OF 10 FEET (3 M) APART AT THE BARRIER LOCATION AND DRIVEN SECURELY INTO THE GROUND A MINIMUM OF 12 INCHES (30 CM). WHEN EXTRA STRENGTH FABRIC IS USED WITHOUT THE WIRE SUPPORT FENCE, POST SPACING SHALL NOT EXCEED 6 FEET (1.8 M).
4. A TRENCH SHALL BE EXCAVATED APPROXIMATELY 4 INCHES (10 CM) WIDE AND 4 INCHES (10 CM) DEEP ALONG THE LINE OF POSTS AND UPSLOPE FROM THE BARRIER.
5. WHEN STANDARD STRENGTH FILTER FABRIC IS USED, A WIRE MESH SUPPORT FENCE SHALL BE FASTENED SECURELY TO THE UPSLOPE SIDE OF THE POSTS USING HEAVY DUTY WIRE STAPLES AT LEAST 1 INCH (25 MM) LONG, TIE WIRES, OR HOG RINGS. THE WIRE SHALL EXTEND INTO THE TRENCH A MINIMUM OF 2 INCHES (5 CM) AND SHALL NOT EXTEND MORE THAN 36 INCHES (90 CM) ABOVE THE ORIGINAL GROUND SURFACE.
6. THE STANDARD STRENGTH FILTER FABRIC SHALL BE STAPLED OR WIRED TO THE FENCE, AND 8 INCHES (20 CM) OF THE FABRIC SHALL BE EXTENDED INTO THE TRENCH. THE FABRIC SHALL NOT EXTEND MORE THAN 36 INCHES (90 CM) ABOVE THE ORIGINAL GROUND SURFACE.
7. THE TRENCH SHALL BE BACKFILLED AND THE SOIL COMPACTED OVER THE FILTER FABRIC.

SILT FENCE INSTALLATION DETAIL D 9.1a
(Sheet 1 of 2) N.T.S.

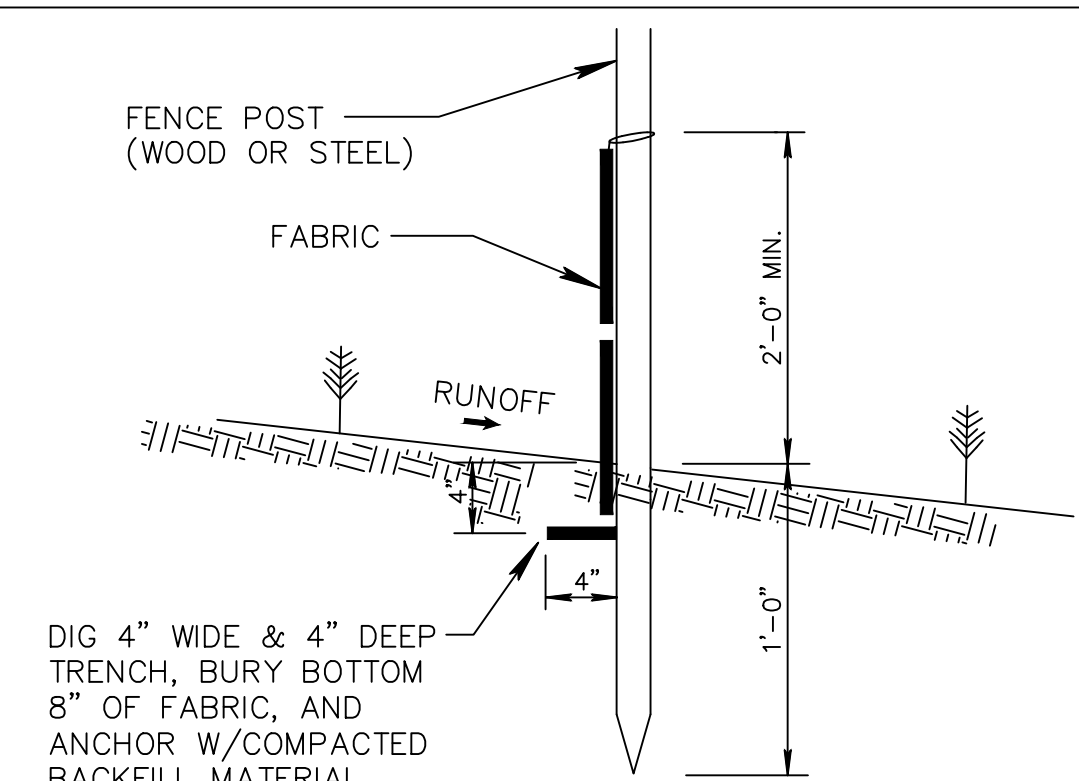


1. CONTRACTOR IS TO CLEAN INLET FILTER AFTER EVERY STORM
2. CONTRACTOR TO REMOVE FABRIC JUST PRIOR TO PAVING.

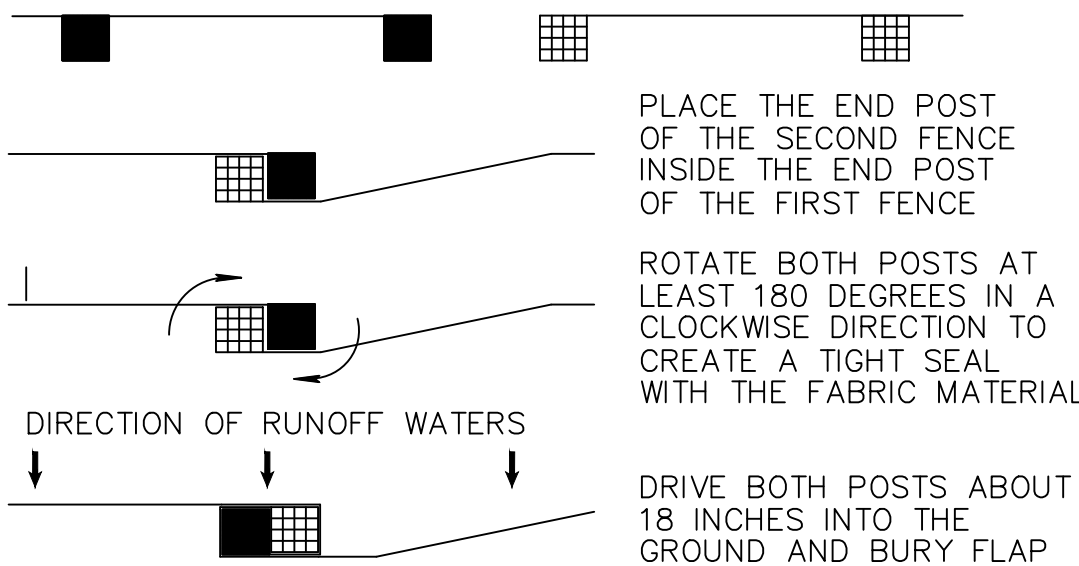
A SEDIMENT TRAP WILL BE EXCAVATED BEHIND THE CURB AT THE INLET. THE BASIN SHALL BE AT LEAST 12 TO 14 INCHES IN DEPTH, APPROXIMATELY 36 INCHES IN WIDTH, AND APPROXIMATELY 7 TO 10 FEET IN LENGTH PARALLEL TO THE CURB.

STORM WATER WILL REACH THE SEDIMENT TRAP VIA CURB CUTS ADJACENT TO EACH SIDE OF THE INLET STRUCTURE. THESE OPENINGS SHALL BE AT LEAST 12 INCHES IN LENGTH. STORM WATER MAY ALSO REACH THE BASIN VIA OVERLAND FLOW LAND AREA BEHIND THE CURB. THE CURB CUTS SHALL BE REPAIRED WHEN THE SEDIMENT TRAP IS REMOVED.

INLET FILTER DETAIL
N.T.S.

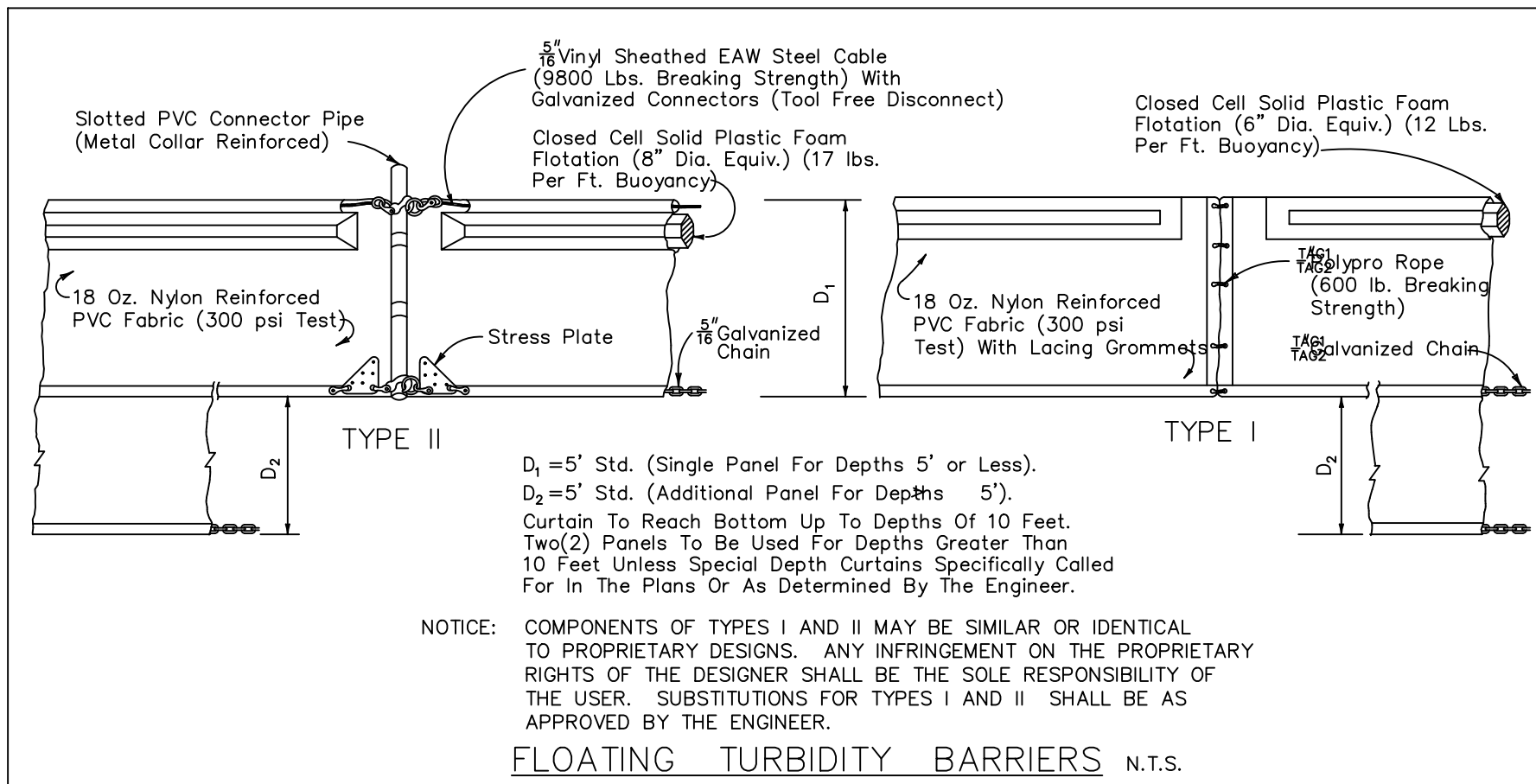


SILT FENCE SECTION
NOT TO SCALE



ATTACHING TWO SILT FENCES
NOT TO SCALE

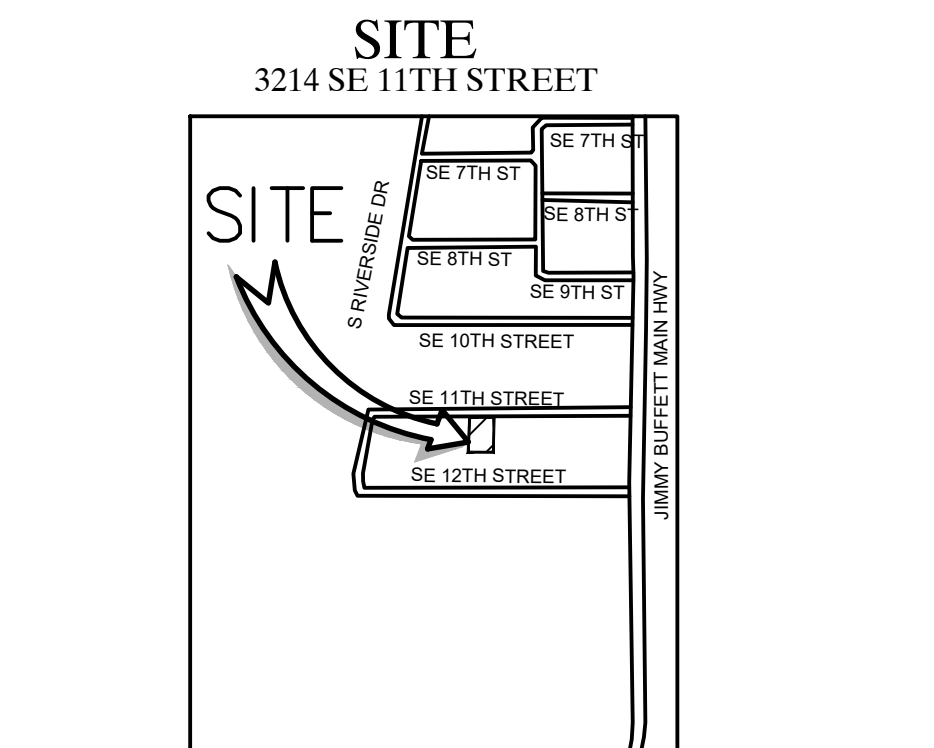
SILT FENCE INSTALLATION DETAIL D 9.1b
(Sheet 2 of 2) N.T.S.



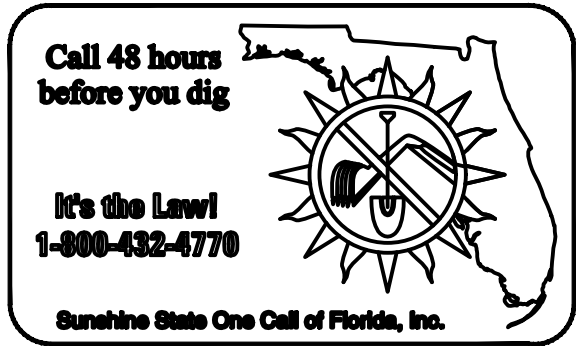
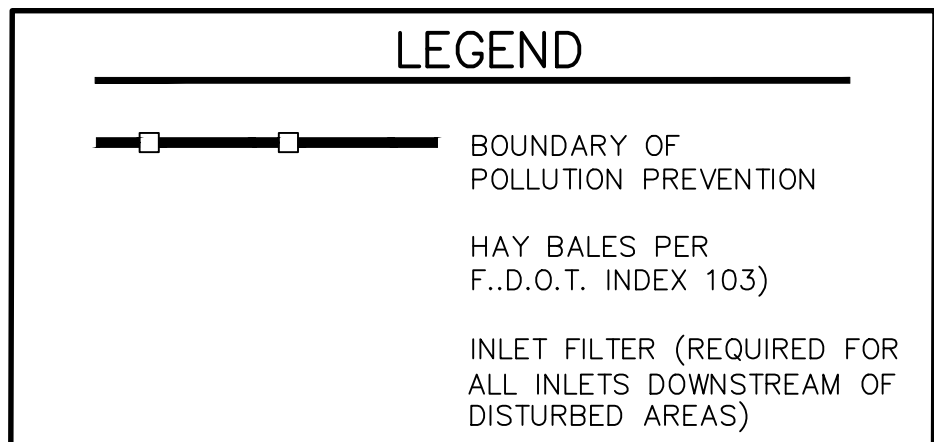
D₁ = 5' Std. (Single Panel For Depths 5' or Less).
D₂ = 5' Std. (Additional Panel For Depths 5').
Curtain To Reach Bottom Up To Depths Of 10 Feet.
Two(2) Panels To Be Used For Depths Greater Than
10 Feet Unless Special Depth Curtains Specifically Called
For In The Plans Or As Determined By The Engineer.

NOTICE: COMPONENTS OF TYPES I AND II MAY BE SIMILAR OR IDENTICAL TO PROPRIETARY DESIGNS. ANY INFRINGEMENT ON THE PROPRIETARY RIGHTS OF THE DESIGNER SHALL BE THE SOLE RESPONSIBILITY OF THE USER. SUBSTITUTIONS FOR TYPES I AND II SHALL BE AS APPROVED BY THE ENGINEER.

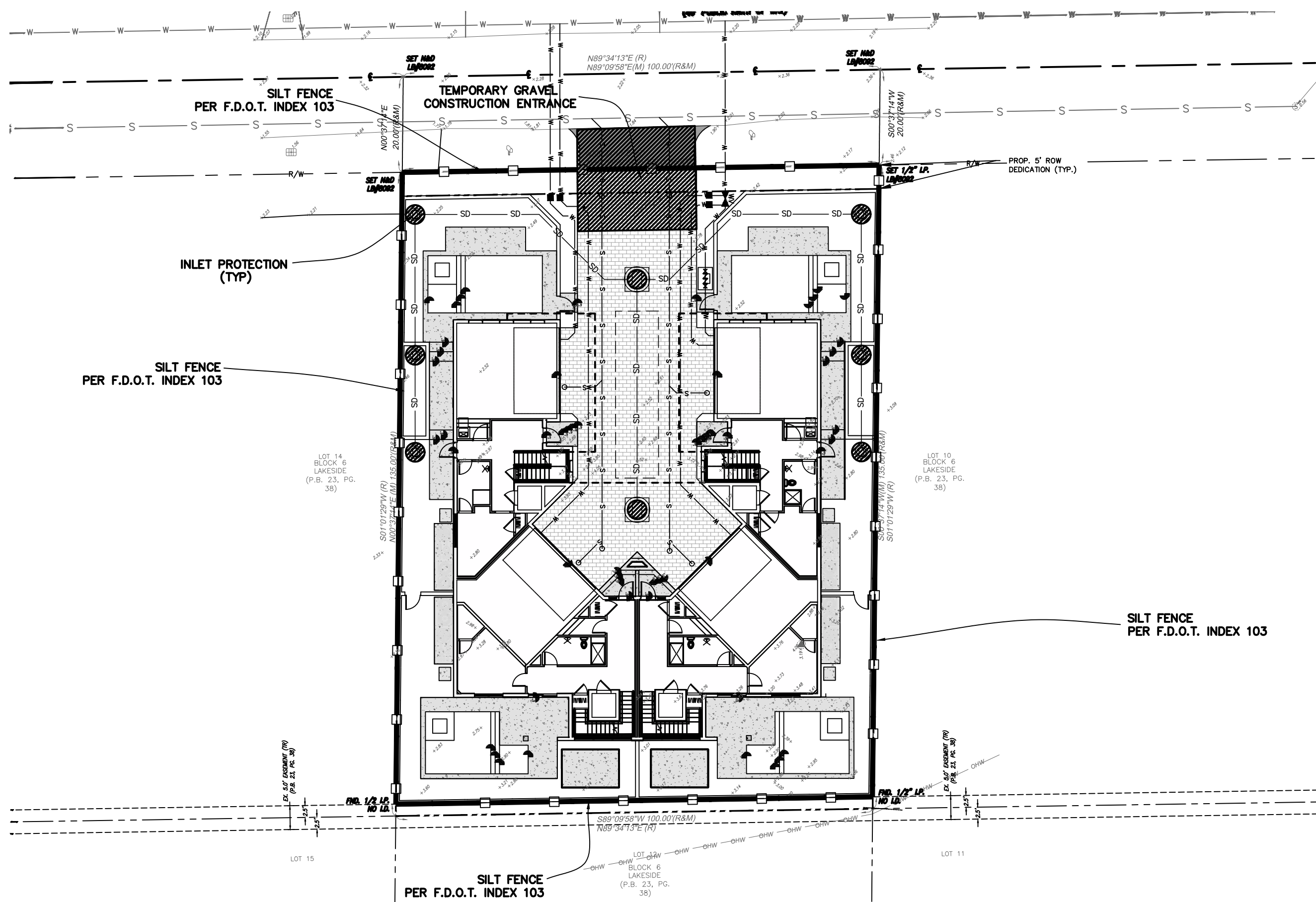
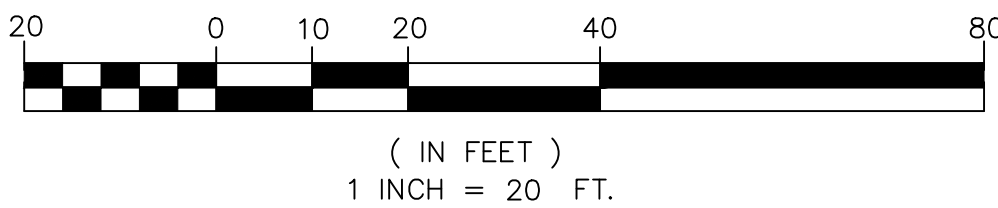
FLOATING TURBIDITY BARRIERS N.T.S




LOCATION MAP
(NOT TO SCALE)



GRAPHIC SCALE



POLLUTION PREVENTION DETAIL

[illegible]

CAULFIELD & WHEELER, INC.
CIVIL ENGINEERING
LANDSCAPE ARCHITECTURE - SURVEYING
7900 GLADES ROAD - SUITE 100
BOCA RATON, FLORIDA 33434
PHONE (561)-392-1991 / FAX (561)-750-1452

POMPANO BEACH TOWNHOMES
3214 SE 1TH STREET
PROPOSED
POLLUTION PREVENTION PLAN AND DETAILS
POMPANO BEACH, FLORIDA, 33062

DATE	05/08/26
DRAWN BY	DJP
F.B./ PG.	----
SCALE	1"= 20'

MATTHEW V. KAHN PROFESSIONAL ENGINEER LICENSE NO. 82227 STATE OF FLORIDA - FOR THE FIRM - DATE

JOB # 11900
SHT.NO. C-2
OF 14 SHEETS